



# HYTHE AND DIBDEN PARISH COUNCIL

*Serving the Community of Dibden, Dibden Purlieu and Hythe*

## ANNUAL REPORT 2014/15

### Chairman's Report

The past year has been notable for the retirement in December of our Parish Clerk, David Shimpe and the recruitment process for his successor. I am grateful for the hard work and support provided by fellow Councillors and members of staff during this process.

David served our community for a total of 14 years, and his legacy is a team of staff which is trained and highly motivated to continue their work in creating and maintaining a superb environment for everyone to work, live and visit.

I would like to formally welcome Stephanie Bennett who has been appointed as the new Clerk. Stephanie comes to our Council from New Forest District Council's Community Safety Team and is already known to several staff. She has told me she is very excited to have the opportunity to work and be effective in a smaller community. She looks forward to meeting and working in partnership with the many organisations and individuals who help to make Hythe, Dibden and Dibden Purlieu so special.

All of our District and Parish Councillors will retire in May this year and not all are seeking re-election. On behalf of our community I would like to thank



*Brenda Smith welcomes new Clerk Stephanie Bennett*

everyone who has served the Council as an elected member over the past 4 years and to wish them all good fortune in whatever path they will subsequently follow.

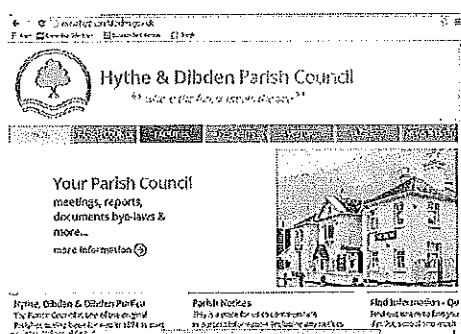
One of the final tasks undertaken by the retiring Clerk was to manage the

process of the Parish Council taking over responsibility for the community safety service after Hampshire County Council withdrew all their funding. The Parish Council was already funding 90% of the cost of the service. Knowing how highly valued our community safety officers, and the work they do is, the Council took the decision to wholly fund and manage the service. Hythe and Dibden are now the only Parish Council in Hampshire to provide a community safety service. We hope that residents will agree that the relatively small extra costs are still excellent value for money. The decision by New Forest District Council to further reduce its grant to the Parish Council has provided financial challenges for Members. However, I am proud to announce that this Council will maintain its current service levels in 2015/16 whilst not increasing the Parish Council element of local residents' Council Tax bill.

*Brenda Smith  
Chairman of Hythe and  
Dibden Parish Council*

### Website

The new website [www.hytheanddibden.gov.uk](http://www.hytheanddibden.gov.uk) was launched and is fast becoming a 'one-stop shop' for information. New content can be added within minutes making it very responsive in the event of emergency such as weather conditions and school closures. Surveys of the community to ask what information they would like to see has resulted in a high level of local information being added to the website. Information about previous and forthcoming council meetings and its facilities is also available on the site.



### Cinema

2015 sees Hythe Cinema celebrate its 10th anniversary. The surplus the cinema makes has always been re-invested in the Parish Hall so that the whole community benefits, major purchases have been black out blinds and the replacement of all the chairs. This year we received a grant from the British Film Industry for a projector of our own and we are investing in an electric screen, a new PA system with mixing desk, a blu ray player and a lap top. This will enhance the cinema experience and also means we will be able to expand our programme and a Saturday morning matinee is planned along with other film events. The equipment can be hired by anyone wanting to use the Parish Hall for conference type events that require multi media. With the new audio equipment it is suitable for hire for music events too.



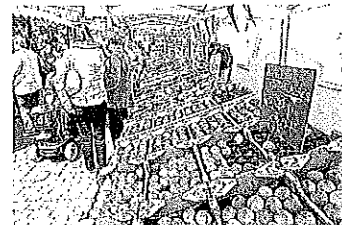
# HYTHE AND DIBDEN PARISH COUNCIL

*Serving the Community of Dibden, Dibden Purlieu and Hythe*

## Enhancing the Community for Local People and Visitors



A long warm summer and work to continue to make the community an attractive place for locals and visitors alike, along with an increased number of specialist events such as Bank Holiday Art and Vintage days, Italian and French events and the Mistletoe Fayre has helped strengthen the sense of community. The Parish Council has also worked in partnership with other event organisers such as the Hythe Fete and the Firework Display to increase

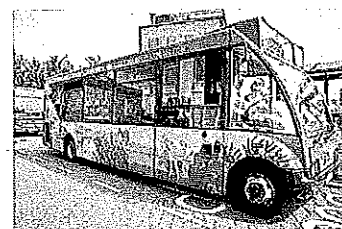


the number of community events. The floral displays have been a key part of adding to the attractiveness and a further ton of daffodil bulbs were planted along with the formal displays, the flower towers and hanging baskets.

## The Beach Bus and New Forest Tour Bus



After years of campaigning Hythe and Dibden became part of the New Forest Tour Bus Green Route this year. Along with bringing in many visitors to Hythe from other parts of the New Forest, 2,094 local people took the opportunity to use the open-topped bus. The Beach Bus had a very successful second year with 7,993 people (35% up on last year) using the bus to visit the Beach and Lymington, with this level of use the bus is on target for sustainability.



## Youth Building Netley View

The Council is actively seeking to provide a community building on land belonging to Exxon near the Netley View Estate. Exxon have been very receptive to the idea and are currently investigating the legal implications of providing a long lease to the Parish Council.

Once the lease has been agreed, the Council, who is working in partnership with the Dibden Allotments Fund and the Handy Trust to provide the facility, will be consulting with the community to seek their ideas for the building

## Play Area Refurbishments - Forest Front Play Area and Skate Park, Bluebell Gardens and Noads Way Play Area

The Council has continued with its strategy to provide quality play provision for residents. Refurbishment works at Forest Front Skate Park and Play Area will take place in the summer, whilst planned improvement works at Bluebell Gardens and Noads Way Play Area have been out to consultation with local people and the results are being collated.



*Forest Front Nature Reserve (Photo: Anthony Maidment)*

## Elections

The next four yearly elections of Members of Town and Parish Councillors takes place on May 7th 2015. Further information on what's involved and to see if you are eligible to stand for election please go to the website [www.hytheanddibden.gov.uk](http://www.hytheanddibden.gov.uk) or alternatively [www.newforest.gov.uk/article/3759/Town-and-Parish-Elections](http://www.newforest.gov.uk/article/3759/Town-and-Parish-Elections)



# HYTHE AND DIBDEN PARISH COUNCIL

*Serving the Community of Dibden, Dibden Purlieu and Hythe*

## Finance

The following details are extracts from the last audited accounts for 2013/14 and a summary of the service provision for 2014/15

### Consolidated Balance Sheet 2013/14

31/03/13 £		31/03/14 £
100,000	<b>Current Assets</b>	
6,394.02	Investments	150,275.75
3,772.67	VAT recoverable	4,516.07
0.00	Debtors	7,456.71
360,171.53	Payment in advance	0.00
	Cash held in hand at Bank	290,436.31
<b>470,338.22.</b>	<b>Total Assets</b>	<b>452,684.84</b>
	<b>Current liabilities</b>	
15,494.45	Creditors	10,331.26
0.00	Receipts in advance	0.00
<b>15,494.45</b>	<b>Total current Liabilities</b>	<b>10,331.26</b>
<b>454,843.77</b>	<b>Net Assets</b>	<b>442,353.58</b>
	<b>Represented by</b>	
236,075.80	General Fund	216,017.53
218,767.97	Earmarked reserves	226,336.05
<b>454,843.77</b>		<b>442,353.58</b>

### Income and Expenditure Account 2013/14

Year ended 31/03/13

Year ended 31/03/14

£	INCOME	£
0.00	Amenity Areas investment A/C	29,744.59
25,195.09	Amenities	25,883.40
35,283.59	GPF	45,448.46
3,667.21	Council	57,958.86
2,994.23	Interests on investments	2,854.05
6,611.26	Other Income	6,615.99
571,907.00	Precept	534,625.00
<b>645,658.38</b>	<b>Total Income</b>	<b>703,130.35</b>
	<b>EXPENDITURE</b>	
3,650.91	Agency Services	3,764.09
396.67	Capital Costs	62,260.50
109,875.65	Amenities	128,823.44
147,208.92	GPF	156,060.15
5,939.66	Council	8,093.58
8,277.43	Special Funds	1,337.73
5,211.04	Other Expenditure	5,089.83
90,682.24	Revenue Account Reserves	43,781.79
1,760.00	Sec 137 Grants	2,175.00
296,084.10	Salaries/Wages	304,234.43
<b>669,086.62</b>	<b>Total Expenditure</b>	<b>715,620.54</b>
215,222.88	Balances as at 1 April	236,075.80
645,658.38	Add Total Income	703,130.35
860,881.26		939,206.15
669,086.62	Deduct Total Expenditure	715,620.54
44,281.16	Transfer to/from reserves	-7,568.08
<b>236,075.80</b>	<b>Balances as at 31/03</b>	<b>216,017.53</b>



# HYTHE AND DIBDEN PARISH COUNCIL

*Serving the Community of Dibden, Dibden Purlieu and Hythe*

## Summary of 2014/15 service provision

Despite New Forest District Council's decision to reduce its grant to the Parish Council by £12,554 the Parish Council has managed to provide the following headline services.

- Litter collections and safety checks on all of the Council's play areas seven days a week
- Regular safety inspections and maintenance of the Council's trees, woodlands and open spaces
  - Continuation of the Council's Play Area Strategy
    - Continued support of the Handy Trust
    - Accredited Community Safety Service
  - Continuing presence on Hythe Hospital Stakeholder Groups



*Jones Lane Allotments (Photo Anthony Maidment)*



- Acts as a consultee for all householder planning and tree applications in the parish.
- Management of three allotment sites which provide 155 plots for residents of the parish
- Provision of summer and winter floral displays together with the planting of daffodils along some verges.

Further details of the Council's services can be found on the website [www.hytheanddibden.gov.uk](http://www.hytheanddibden.gov.uk) or by contacting the office on 023 8084 1411

## Calendar of Events

- Saturday 4th April  
*Art & Vintage Fayre*
- Saturday 18th April  
*King John's Morris Men*
- Saturday 25th April  
*Edward Unwin VC Event*  
*(Anzac Day/100th Commemoration of Gallipoli)*
- Monday 4th May  
*Art & Vintage Fayre*
- Monday 25th May  
*Art & Vintage Fayre*
- Friday 12th June  
*France in Hythe*
- Saturday 4th July  
*Italia in Piazza*
- 9th-13th July  
*Waterside Arts Festival*
- Monday 31st August  
*Art & Vintage Fayre*
- Saturday 12th September  
*Italia in Piazza*
- Friday 27th November  
*France in Hythe*
- Saturday 28th November  
*Mistletoe Fayre*

## 2015 COMMUNITY SPIRIT AWARDS

Each year Hythe and Dibden Parish Council in conjunction with The Herald choose two recipients of the Community Spirit Award. The award is given to members of the Parish who have given their time and effort contributing to projects that enhance the quality of life for people in the community. This year the awards have been given to: **Caroline Hesketh** who has volunteered at Waterside Primary School for the last 25 years. Some of the activities she undertakes at the school are listening to children read, helping with spellings, running and supporting the PTA, running the school bookshop as well as duties as a dinner lady. **Nicky Hopkins**. Alongside working at Hythe Library and organising events there Nicky is Chair of Governors at Hythe School, she is also an integral part of the Hythe and Beaulieu District Guides and Brownies and 3 years ago she re-established Hythe Village Fete which she has been organising ever since.

Both women will be presented with their awards at The Parish Hall in March.